



KREATIV INDUSTRIES

Your Trusted Partner for Precision Metal Parts



📍 Plot No : A-34, MIDC Halkarni, Tal: Chandgad, Dist: Kolhapur, Pin: 416507,
Maharashtra, INDIA.

✉️ kreativindustries21@gmail.com, info@kreativindustries.com

☎️ +91-9591357328, 9880213921

About Us

Founded in 2021, KREATIV INDUSTRIES is a leading provider of precision engineering solutions specializing in precision machining work, sheet metal stamping work, MIG & TIG welding work and non-ferrous casting work. Led by a team of experts with extensive experience in engineering and manufacturing, we provide tailored solutions to meet our clients' unique needs of delivery, quality and cost-effectiveness.

With a focus on innovation, technical excellence, and reliability, KREATIV INDUSTRIE strives to be your trusted partner, providing efficient and seamless solutions that ensure the success of every project.

Vision

At KREATIV INDUSTRIES, our vision is to become a partner of choice for original equipment manufacturers by providing bespoke solutions in terms of product quality, delivery and cost-effectiveness.



Values

At KREATIV INDUSTRIES, our values are the cornerstone of our success, guiding us in every aspect of our operations.

We are committed to :

- **Excellence of Work** : Upholding the highest standards of quality in every project we undertake.
- **Customer Centricity** : Placing our clients' needs at the heart of everything we do, we ensure tailored solutions & long term business relations.
- **Innovation** : Continuously advancing our technologies and processes to deliver cutting-edge solutions that drive progress.
- **Integrity** : Building trust with our clients through transparency, honesty, and ethical business practices.
- **Collaboration** : Fostering a culture of teamwork, both within our organization and with our clients, to achieve shared goals and success.
- **Sustainability** : Striving for responsible business practices that contribute to the well-being of our communities and the environment.

What makes us a partner of choice?

- Prompt attention to customer needs
- Problem-solving approach
- Quality at the heart of everything we do
- Cost-effectiveness
- Business transparency



PRECISION MACHINING

Welcome to our state-of-the-art machining facility, where precision and quality meet cutting-edge technology. Our facility is equipped with advanced VMC (Vertical Machining Centers) and CNC (Computer Numerical Control) Turning Machines, ensuring exceptional accuracy and a superior surface finish on every project. Whether you're working with intricate geometries or demanding designs, we have the expertise and equipment to bring your vision to life.

We specialize in a broad range of materials, including both ferrous and non-ferrous metals, and are fully capable of handling complex machining tasks with precision. From prototyping to full-scale production, we provide reliable, high-quality machining services that meet the toughest industry standards. Let us turn your ideas into reality with the precision and surface excellence you deserve.

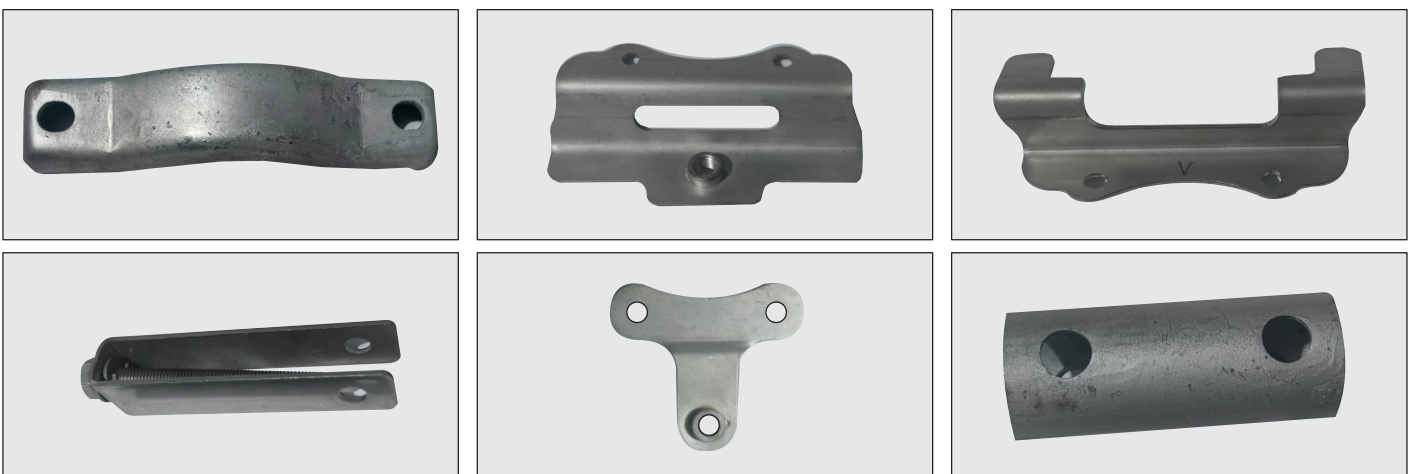


SHEET METAL STAMPING & FABRICATION

We are committed to providing high-precision sheet metal stamping and fabrication solutions that cater to diverse industries needs.

We leverage high-tonnage stamping presses, and advanced fabrication techniques with cutting-edge CNC and VMC machining, to produce components that meet the most stringent industry standards.

Our team of highly skilled engineers and technicians ensures that every product we manufacture is of the highest quality, combining durability, precision, and cost efficiency. Whether it's prototyping, small-batch production, or large-scale manufacturing, we have the expertise to deliver superior solutions that align with your business needs.



1. Sheet Metal Stamping

We specialize in precision metal stamping for a wide range of materials, including mild steel, stainless steel, aluminum, brass, and copper. Our stamping capabilities include:

- **Progressive Die Stamping**

Ideal for high-volume production, ensuring uniformity and efficiency.

- **Deep Draw Stamping**

Producing complex, seamless, and structurally strong parts.

- **Blanking & Piercing**

Cutting and hole-punching with high dimensional accuracy.

- **Bending & Forming**

Shaping metal into intricate forms with precise tolerances.

- **Fine Blanking**

Providing superior edge finish and tight dimensional control We utilize mechanical & hydraulic presses ranging from 50 to 200 tons, enabling us to handle both light and heavy-gauge materials with efficiency.

2. Sheet Metal Fabrication

Providing superior edge finish and tight dimensional control. We offer comprehensive metal fabrication services, from raw material processing to final assembly. Our capabilities include:

- **Laser Cutting**

Precision cutting for complex shapes and detailed designs.

- **CNC & VMC Machining**

ensuring exceptional accuracy and a superior surface finish on every project

- **Welding & Assembly**

Quality TIG, MIG and spot welding for strong, durable joints..

- **Bending & Rolling**

Achieving high-precision curves and folds in sheet metal.

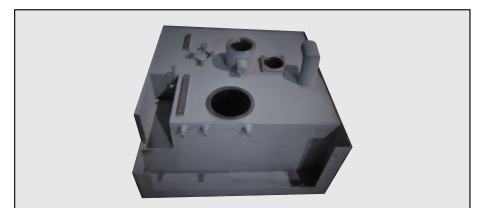
- **Riveting & Fastening**

Secure component assembly for various industrial applications.

- **Powder Coating & Surface Finishing**

Corrosion-resistant finishes for extended product life.

Our facility is equipped with automated and semi-automated fabrication equipment, ensuring efficiency, consistency, and minimal material wastage.



NON-FERROUS CASTING WORKS

We are specialized in high-quality non-ferrous metal casting, delivering precision-engineered components that meet the most demanding industry standards

We offer casting solutions for a variety of non-ferrous metals, including:

- Aluminum** Lightweight, corrosion-resistant, and ideal for automotive, aerospace, and industrial applications.
- Brass & Bronze** Excellent for decorative, marine, and heavy-duty applications due to their strength and resistance to wear.
- Copper** Highly conductive and perfect for electrical components and heat exchanger.
- Gun Metal** High corrosion resistance, strength, and durability, widely used in marine, pump, and valve applications.
- Zinc & Magnesium** Preferred for precision die-casting applications, offering strength with reduced weight.



Sectors We Serve

Telecommunication Equipment Industry

We specialize in precision machining and sheet metal stamping services for leading telecommunication equipment manufacturers.

Construction Equipment Industry

Expanding our offerings, we provide metal fabrication services to construction equipment manufacturers and are steadily growing our presence in this sector.

Electrical Power Transmission Equipment Industry

We offer non-ferrous casting and precision machining services tailored to the electrical power transmission sector.

Automobile Industry

We provide high-quality precision services to the automobile industry, focusing on advanced engineering, automation, and supporting the growth of electric vehicles and smart technologies.

Machine Tool Industry

Our services support the machine tool sector, offering precision engineering and tools essential for automation and industrial production across various industries.

We cater to the metal parts requirements across various industries, ensuring high-quality and precision-engineered solutions.

Our Facilities :

Location : We are located in the South-Eastern part of India and are well connected by road, rail and air.

Address : Plot No.: A-34, MIDC Halkarni, Taluka: Chandgad, District: Kolhapur, Maharashtra - 416507 India

- Nearest Railway Station: Belgaum
- Nearest Air Base (Domestic): Belgaum
- Nearest Air Base (International): Goa

Machine Shop :



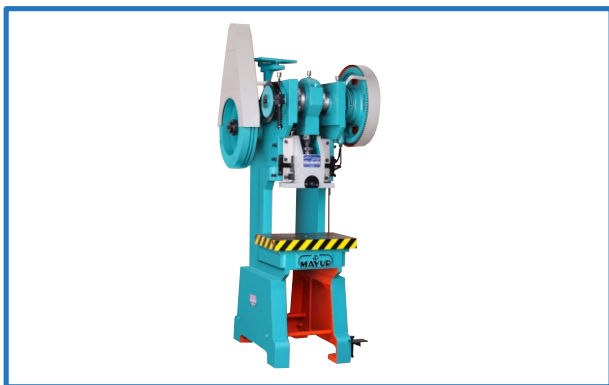
Vertical Machining Center (VMC)

- Make : Bharat Fritz Werner Ltd. – 1 No
- Model : BMV50 TC24
- Table Size : 1000X510
- Travel (X, Y, Z): (800X510X510)
- UCAM URQ 250HS RP Rotary Table
- PRAGATI 24 TOOLS ATC
- Controller : FANUC Fanuc Oi MF Plus



CNC Turning Machine

- Make : Askar Microns Pvt. Ltd. – 1 No
- Model : SPINNER J15
- Chuck Size : 200 (Kitagawa)
- Spindle Nose : A2-6
- Spindle Motor Power : 11/15
- Turret : 8 Stations – Cosmos CLT80 Hyd.
- Controller : FANUC Oi TFA Plus
- Maximum Turning Dia : 375MM
- Maximum Turning Length : 425Mm



Mechanical Power Press

- Make : Mayur Industries
- Capacity : 20 TON – 1 No
- 30 TON – 1 No
- 50 TON – 1 No
- Make : Rajesh Machines (India) LLP
- Capacity : 100 TON – 1 No
- 200 TON – 1 No



Mechanical Power Shearing

- Make : Jayson Machines Impex – 1 No
- Capacity :
MS – 4MM THK X 1500MM LONG
SS – 2MM THK X 1250MM LONG



Machine Shop :

MIG WELDING MACHINE

- Make : Mogora Cosmic Pvt. Ltd. – 2 Nos
- Capacity : 400 AMPS

PILLAR DRILLING MACHINE

- Make : Prakash Engitech Pvt. Ltd. – 2 Nos
- Capacity : Ø25MM DRILL

CIRCULAR SAW PIPE CUTTING MACHINE

- Make: Sohit Engineering Works – 1 No
- Capacity: MS Ø60MMX3MM THK Pipe & SS Ø30MMX1.2MM THK Pipe

RECIPROCATING AIR COMPRESSOR

- Make: ELTECH Equipments – 1 No
- Capacity: Motor- 5Hp,
Air Tank Capacity: 220L,
Flow Rate : 10CFM, Pressure: 10 Bar



Why Work With us

State-of-the-Art Infrastructure

Our facility is equipped with:

- High-precision CNC & VMC machines
- Stamping presses (50T – 200T)
- Laser cutting and automated fabrication units
- Advanced welding and finishing systems

Cost-Effective & Scalable Production

With efficient manufacturing techniques and optimized resource utilization, we offer competitive pricing without compromising on quality. Our production lines are designed to scale up seamlessly, handling both low-volume and high-volume orders efficiently.

On-Time Delivery & Supply Chain Efficiency

We value time-bound commitments and ensure streamlined supply chain management to deliver projects on schedule.

